

The Andover

The Avalon Collection

Engineered homes built magnificently, promptly, affordably.

Multifamily

2 Bedrooms
2 Baths
(each unit)

90'-4" x 70'-0"

Each Unit 1355 s.f.

Each Floor 6082 s.f.

Total 24,328 s.f.

The Andover is a lovely four story apartment building. The plan features four bedrooms and two bathrooms per unit and boasts an open living area.



560 Turnpike Street
Canton, MA 02021

Phone: 781-828-2100

Fax: 781-828-1050

Info@avalonbuildingsystems.com
www.avalonbuildingsystems.com

The Andover

The Avalon Collection

Engineered homes built magnificently, promptly, affordably.

Multifamily

2 Bedrooms
2 Baths
(each unit)

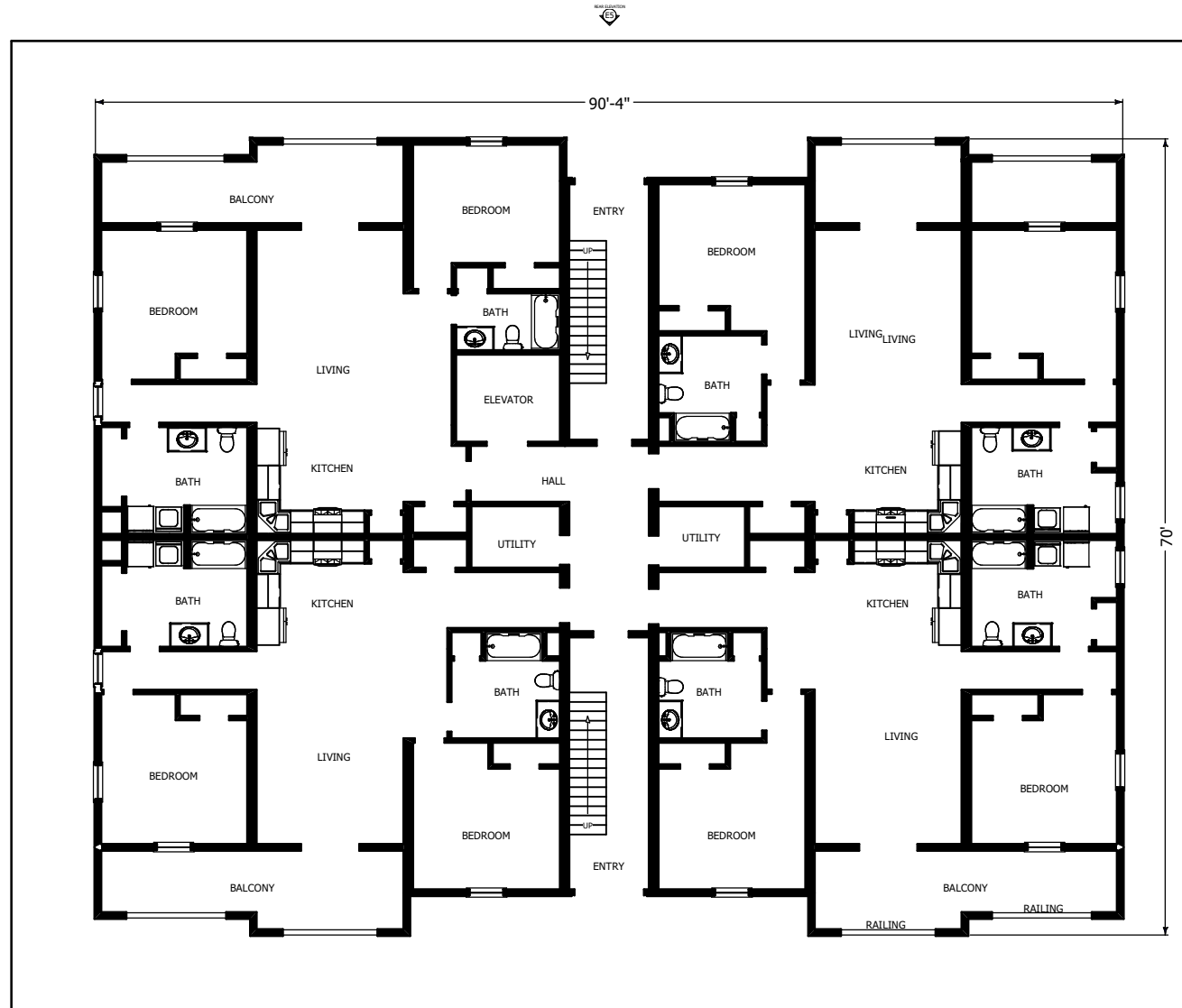
90'-4" x 70'-0"

Each Unit 1355 s.f.

Each Floor 6082 s.f.

Total 24,328 s.f.

The Andover is a lovely four story apartment building. The plan features four bedrooms and two bathrooms per unit and boasts an open living area.



560 Turnpike Street
Canton, MA 02021

Phone: 781-828-2100

Fax: 781-828-1050

Info@avalonbuildingsystems.com
www.avalonbuildingsystems.com

The Andover

The Avalon Collection

Engineered homes built magnificently, promptly, affordably.

Multifamily

2 Bedrooms
2 Baths
(each unit)

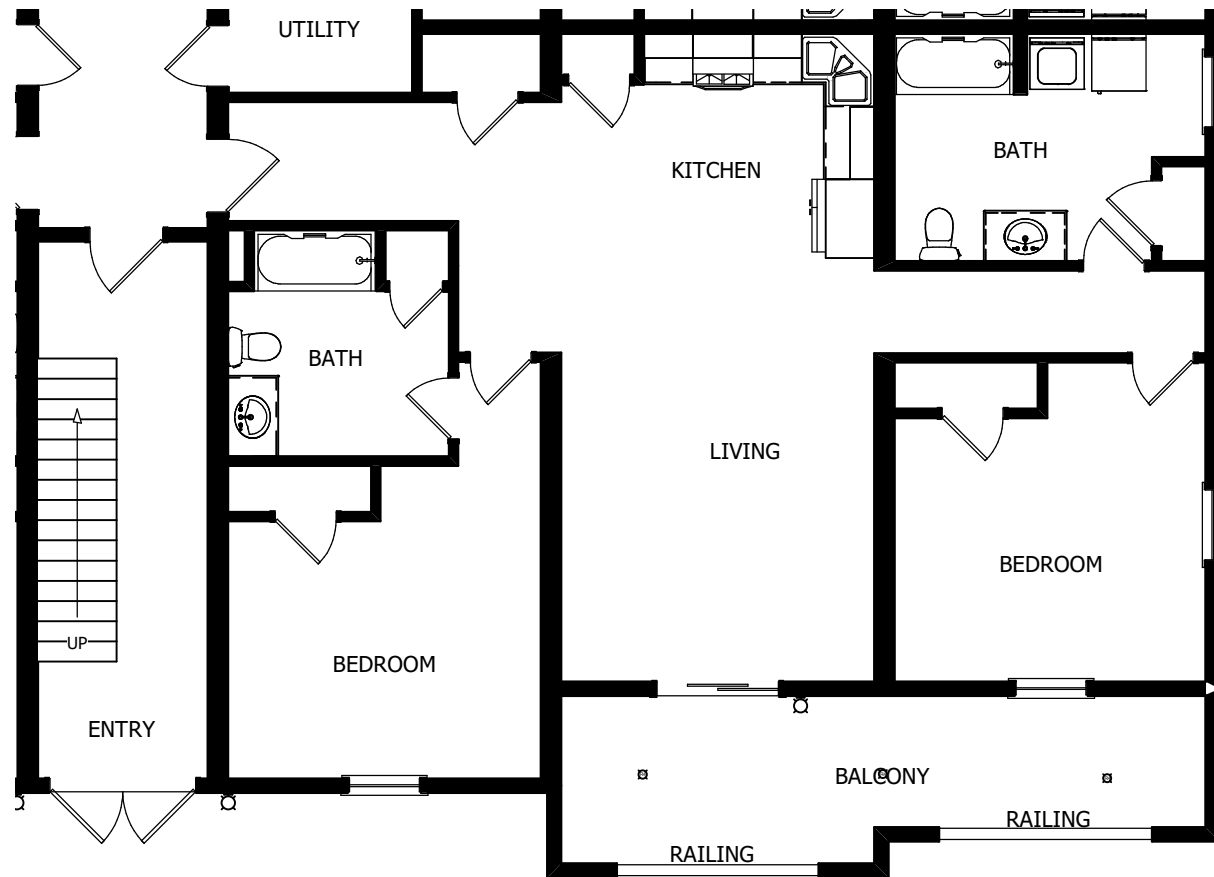
90'-4" x 70'-0"

Each Unit 1355 s.f.

Each Floor 6082 s.f.

Total 24,328 s.f.

The Andover is a lovely four story apartment building. The plan features four bedrooms and two bathrooms per unit and boasts an open living area.



UNIT PLAN



560 Turnpike Street
Canton, MA 02021

Phone: 781-828-2100

Fax: 781-828-1050

Info@avalonbuildingsystems.com
www.avalonbuildingsystems.com