

The Ashby

The Avalon Collection

Engineered homes built magnificently, promptly, affordably.

Contemporary Plan

2 Bedrooms / 2 Baths

28'-0" X 27'-6"

1st Floor: 760 s.f.

2nd Floor: 760 s.f.

Total Finished area:
1540 s.f.

The Ashby is a lovely and efficient Contemporary style home with a large living area.
The plan also features two bedrooms and two bathrooms.



560 Turnpike Street
Canton, MA 02021
Phone: 781-828-2100
Fax: 781-828-1050
Info@avalonbuildingsystems.com
www.avalonbuildingsystems.com

The Ashby

The Avalon Collection

Engineered homes built magnificently, promptly, affordably.

Contemporary
Plan

2 Bedrooms / 2
Baths

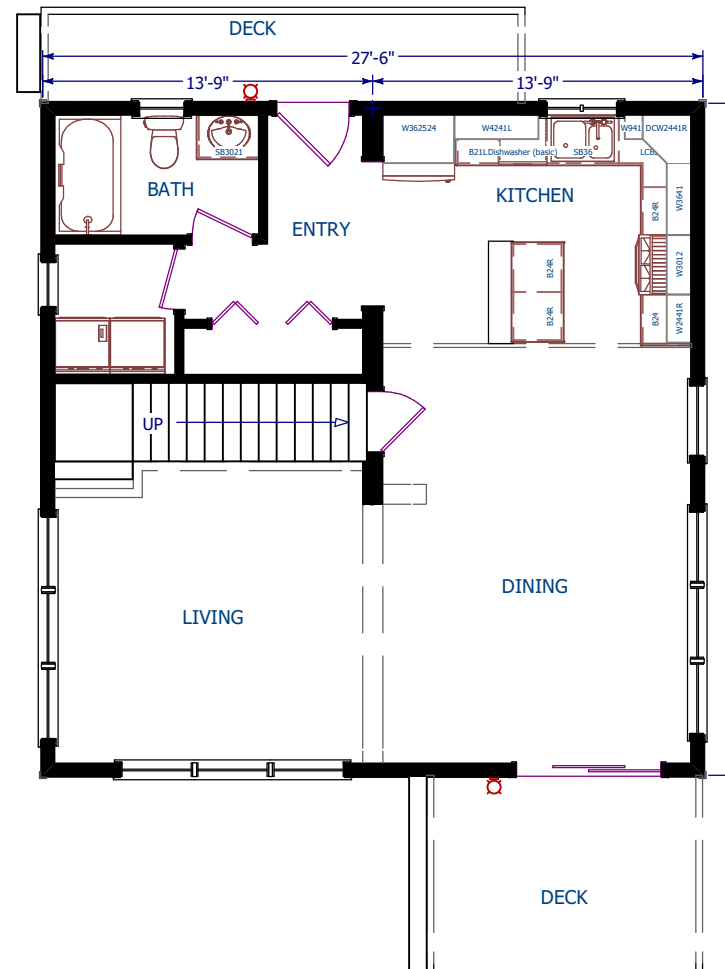
28'-0" X 27'-6"

1st Floor: 760 s.f.

2nd Floor: 760 s.f.

Total Finished area:
1540 s.f.

The Ashby is a lovely and efficient Contemporary style home with a large living area.
The plan also features two bedrooms and two bathrooms.



1st Floor



560 Turnpike Street
Canton, MA 02021
Phone: 781-828-2100
Fax: 781-828-1050
Info@avalonbuildingsystems.com
www.avalonbuildingsystems.com

The Ashby

The Avalon Collection

Engineered homes built magnificently, promptly, affordably.

Contemporary
Plan

2 Bedrooms / 2
Baths

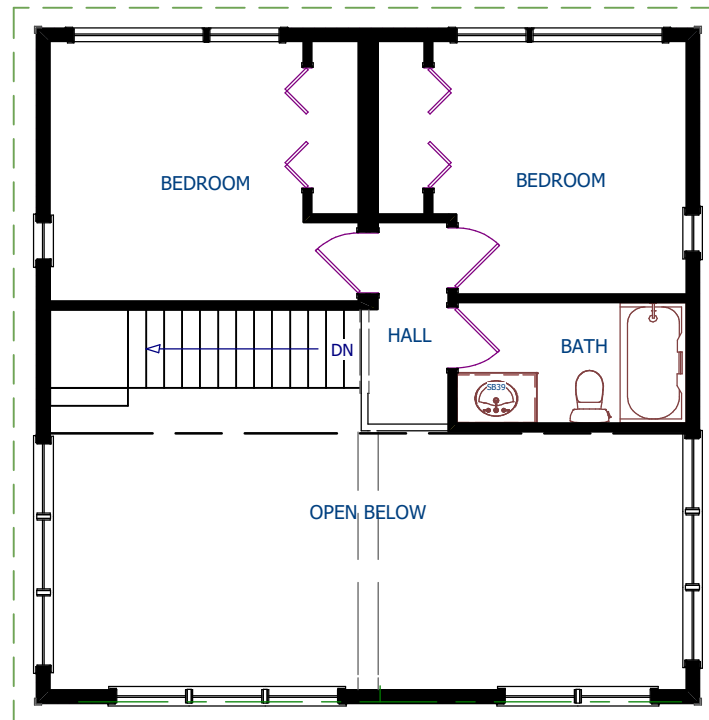
28'-0" X 27'-6"

1st Floor: 760 s.f.

2nd Floor: 760 s.f.

Total Finished area:
1540 s.f.

The Ashby is a lovely and efficient Contemporary style home with a large living area.
The plan also features two bedrooms and two bathrooms.



2nd Floor



560 Turnpike Street
Canton, MA 02021
Phone: 781-828-2100
Fax: 781-828-1050
Info@avalonbuildingsystems.com
www.avalonbuildingsystems.com