

The Berkshire

The Avalon Collection

Engineered homes built magnificently, promptly, affordably.

Cape Style Plan

3 Bedrooms
2.5 Baths

60'-0" x 34'-0"

First Floor Living Area
1,829 s.f.

Second Floor 773 s.f.
To be finished on site

Total Living Area
2,602 s.f.

(Shown with optional
dormers)

The Berkshire is a chalet style plan which offers a large open living area which includes a large great room with double height ceilings. The plan also includes a master suite on the first floor with a large master bathroom. The proposed second floor includes two additional bedrooms and bathrooms.



560 Turnpike Street
Canton, MA 02021

Phone: 781-828-2100

Fax: 781-828-1050

Info@avalonbuildingsystems.com
www.avalonbuildingsystems.com

The Berkshire

The Avalon Collection

Engineered homes built magnificently, promptly, affordably.

Cape Style Plan

3 Bedrooms
2.5 Baths

60'-0" x 34'-0"

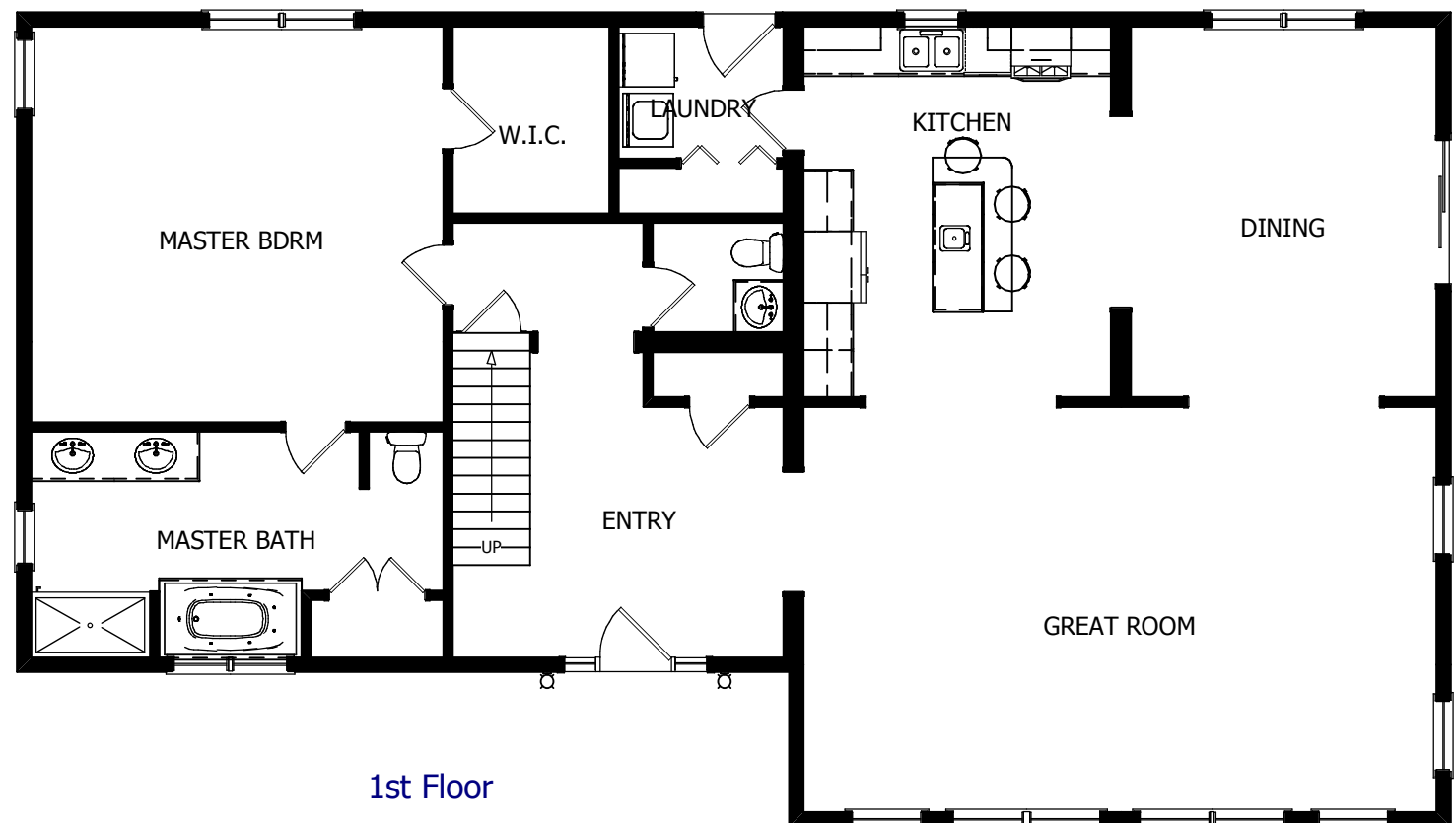
First Floor Living Area
1,829 s.f.

Second Floor 773 s.f.
To be finished on site

Total Living Area
2,602 s.f.

(Shown with optional
dormers)

The Berkshire is a chalet style plan which offers a large open living area which includes a large great room with double height ceilings. The plan also includes a master suite on the first floor with a large master bathroom. The proposed second floor includes two additional bedrooms and bathrooms.



560 Turnpike Street
Canton, MA 02021
Phone: 781-828-2100
Fax: 781-828-1050

Info@avalonbuildingsystems.com
www.avalonbuildingsystems.com

The Berkshire

The Avalon Collection

Engineered homes built magnificently, promptly, affordably.

Cape Style Plan

3 Bedrooms
2.5 Baths

60'-0" x 34'-0"

First Floor Living Area
1,829 s.f.

Second Floor 773 s.f.
To be finished on site

Total Living Area
2,602 s.f.

(Shown with optional
dormers)



560 Turnpike Street
Canton, MA 02021
Phone: 781-828-2100
Fax: 781-828-1050

Info@avalonbuildingsystems.com
www.avalonbuildingsystems.com

The Berkshire is a chalet style plan which offers a large open living area which includes a large great room with double height ceilings. The plan also includes a master suite on the first floor with a large master bathroom. The proposed second floor includes two additional bedrooms and bathrooms.

