

# The Brookfield

# The Avalon Collection

*Engineered homes built magnificently, promptly, affordably.*

The Brookfield is a cape style plan which offers a large living area with a garage and optional bonus room above. The plan includes a master suite on the first floor with a large master bathroom. It has a dining room and family room with vaulted ceilings. The optional second floor includes two additional bedrooms and bathroom.

## Cape Style Plan

4 Bedrooms  
3 Baths

50'-0" x 57'-6"

First Floor Living Area  
1,595 s.f.

Second Floor 864 s.f.  
To be finished on site

Optional Bonus Room  
312 s.f.

Total Living Area  
2,459 s.f.



560 Turnpike Street  
Canton, MA 02021  
Phone: 781-828-2100  
Fax: 781-828-1050

Info@avalonbuildingsystems.com  
www.avalonbuildingsystems.com

# The Brookfield

# The Avalon Collection

Engineered homes built magnificently, promptly, affordably.

The Brookfield is a cape style plan which offers a large living area with a garage and optional bonus room above. The plan includes a master suite on the first floor with a large master bathroom. It has a dining room and family room with vaulted ceilings. The optional second floor includes two additional bedrooms and bathroom.

## Cape Style Plan

4 Bedrooms  
3 Baths

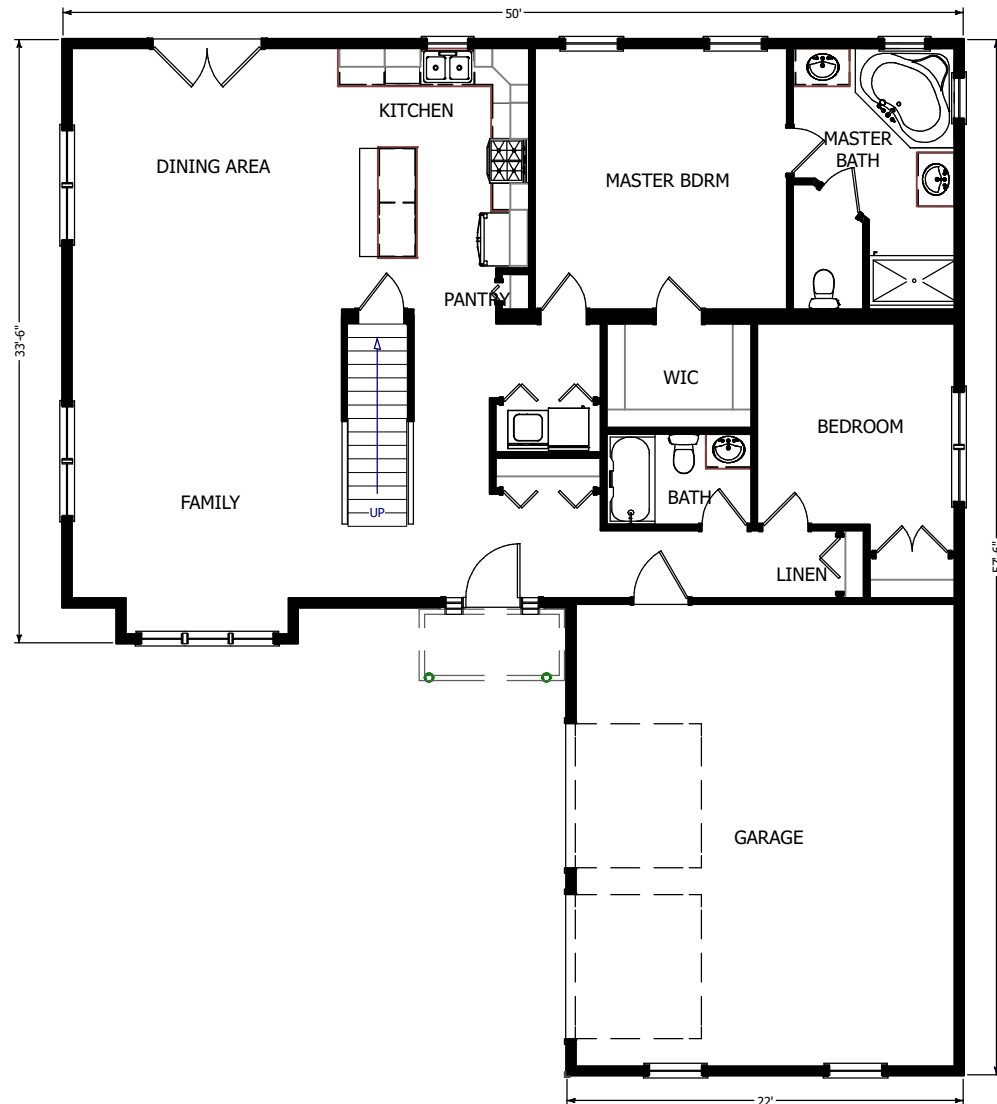
50'-0" x 57'-6"

First Floor Living Area  
1,595 s.f.

Second Floor 864 s.f.  
To be finished on site

Optional Bonus Room  
312 s.f.

Total Living Area  
2,459 s.f.



560 Turnpike Street

Canton, MA 02021

Phone: 781-828-2100

Fax: 781-828-1050

Info@avalonbuildingsystems.com

www.avalonbuildingsystems.com

# The Brookfield

# The Avalon Collection

*Engineered homes built magnificently, promptly, affordably.*

The Brookfield is a cape style plan which offers a large living area with a garage and optional bonus room above. The plan includes a master suite on the first floor with a large master bathroom. It has a dining room and family room with vaulted ceilings. The optional second floor includes two additional bedrooms and bathroom.

## Cape Style Plan

4 Bedrooms  
3 Baths

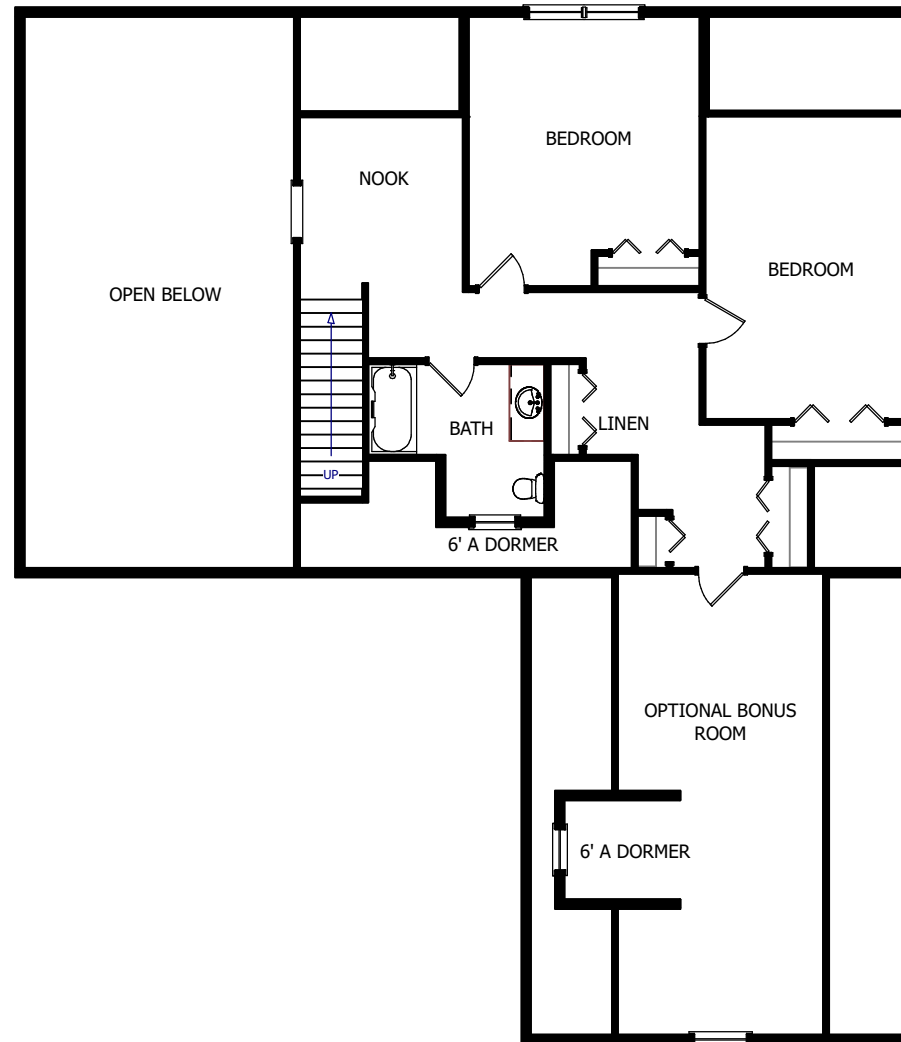
50'-0" x 57'-6"

First Floor Living Area  
1,595 s.f.

Second Floor 864 s.f.  
To be finished on site

Optional Bonus Room  
312 s.f.

Total Living Area  
2,459 s.f.



560 Turnpike Street

Canton, MA 02021

Phone: 781-828-2100

Fax: 781-828-1050

Info@avalonbuildingsystems.com

www.avalonbuildingsystems.com