

The Cambridge

The Avalon Collection

Engineered homes built magnificently, promptly, affordably.

Multifamily

2 Bedrooms
1 1/2 Baths
(Each unit)

15'-9" x 34'-0"

Each Unit Square
Footage 1606 s.f.

The Cambridge is an efficient three story multi-family apartment building with a Garage underneath. The plan features two bedrooms and one and a half bathrooms over three stories with an open living/dining room area. This plan can be adapted for as many units as your project requires.



560 Turnpike Street
Canton, MA 02021

Phone: 781-828-2100

Fax: 781-828-1050

Info@avalonbuildingsystems.com
www.avalonbuildingsystems.com

The Cambridge

The Avalon Collection

Engineered homes built magnificently, promptly, affordably.

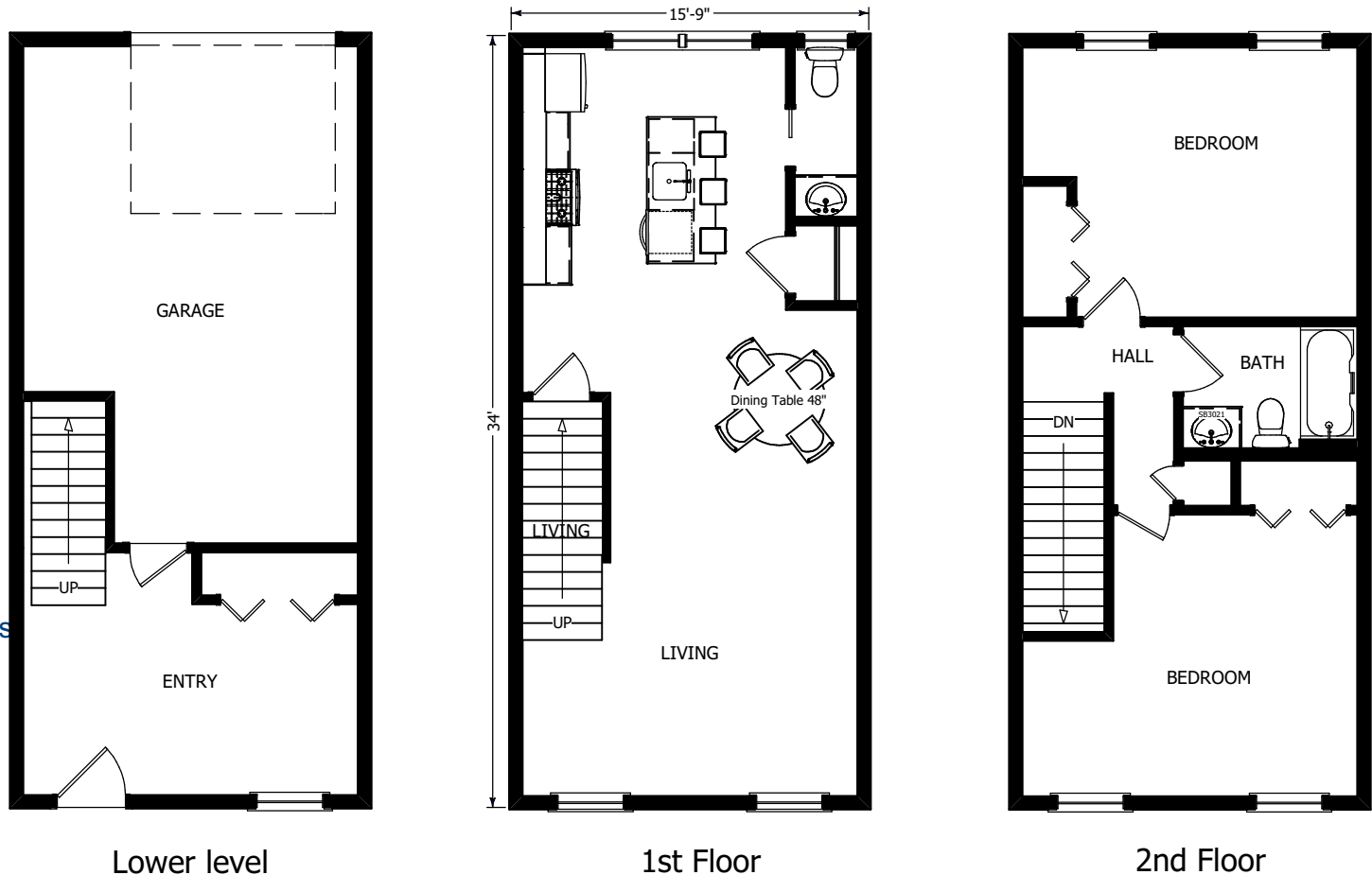
Multifamily

2 Bedrooms
1 1/2 Baths
(Each unit)

15'-9" x 34'-0"

Each Unit Square
Footage 1606 s.f.

The Cambridge is an efficient three story multi-family apartment building with a Garage underneath. The plan features two bedrooms and one and a half bathrooms over three stories with an open living/dining room area. This plan can be adapted for as many units as your project requires.



560 Turnpike Street
Canton, MA 02021

Phone: 781-828-2100

Fax: 781-828-1050

Info@avalonbuildingsystems.com
www.avalonbuildingsystems.com