

The Lexington

The Avalon Collection

Engineered homes built magnificently, promptly, affordably.

Two Story Plan
3 Bedrooms / 2.5
Baths

41'-6" x 29'-0"

1st Floor 1160 s.f.

2nd Floor 1160 s.f

Total Living Area
2320s.f.

Shown with optional
Porch
29'-9" x 6'-0"

The Lexington is a great two story plan with three spacious bedrooms, a large family room, as well as a large central kitchen. Shown with optional Porch



560 Turnpike Street
Canton, MA 02021

Phone: 781-828-2100

Fax: 781-828-1050

Info@avalonbuildingsystems.com
www.avalonbuildingsystems.com

The Lexington

The Avalon Collection

Engineered homes built magnificently, promptly, affordably.

Two Story Plan
3 Bedrooms / 2.5
Baths

41'-6" x 29'-0"

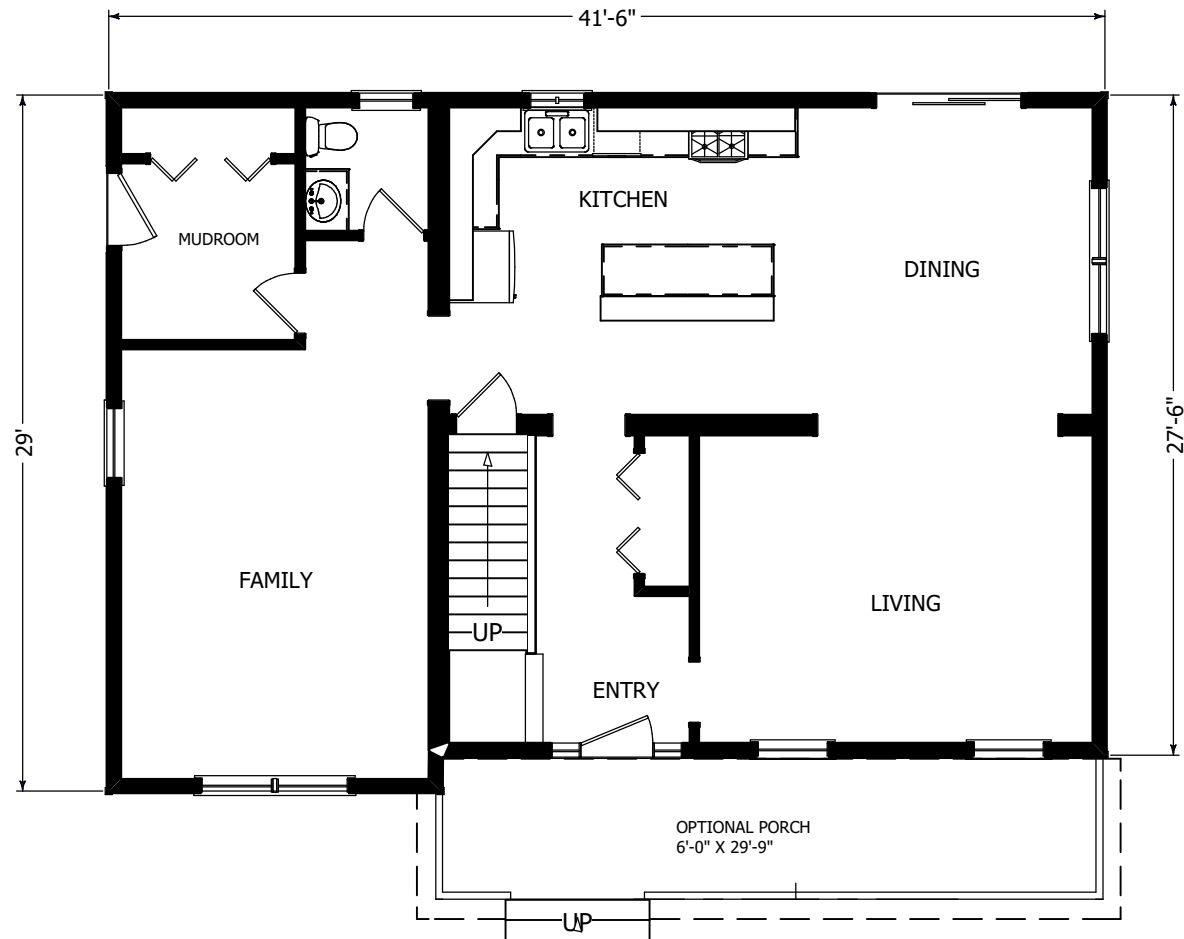
1st Floor 1160 s.f.

2nd Floor 1160 s.f.

Total Living Area
2320s.f.

Shown with optional
Porch
29'-9" x 6'-0"

The Lexington is a great two story plan with three spacious bedrooms, a large family room, as well as a large central kitchen.
Shown with optional Porch



1st Floor



560 Turnpike Street
Canton, MA 02021

Phone: 781-828-2100

Fax: 781-828-1050

Info@avalonbuildingsystems.com
www.avalonbuildingsystems.com

The Lexington

The Avalon Collection

Engineered homes built magnificently, promptly, affordably.

Two Story Plan
3 Bedrooms / 2.5
Baths

41'-6" x 29'-0"

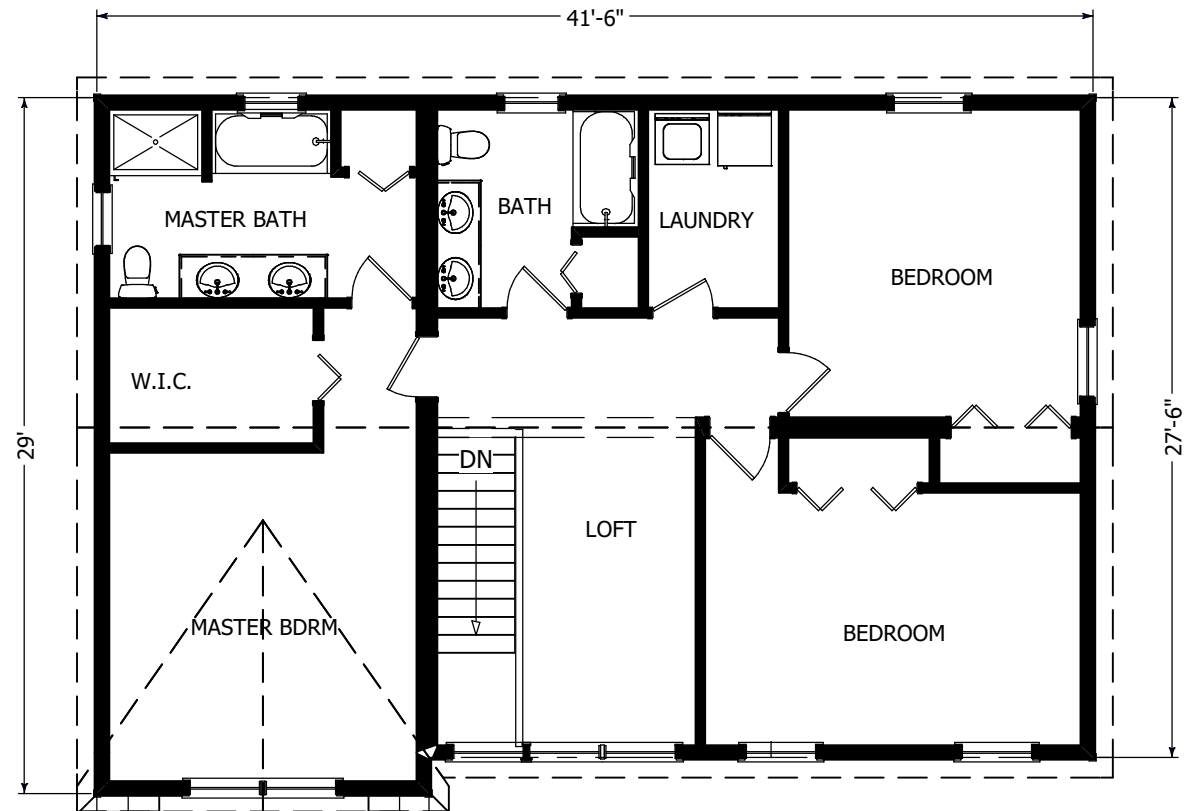
1st Floor 1160 s.f.

2nd Floor 1160 s.f.

Total Living Area
2320s.f.

Shown with optional
Porch
29'-9" x 6'-0"

The Lexington is a great two story plan with three spacious bedrooms, a large family room, as well as a large central kitchen. Shown with optional Porch



2nd Floor



560 Turnpike Street
Canton, MA 02021

Phone: 781-828-2100

Fax: 781-828-1050

Info@avalonbuildingsystems.com
www.avalonbuildingsystems.com