

# The Marblehead

# The Avalon Collection

*Engineered homes built magnificently, promptly, affordably.*

## Single Story Plan

3 Bedrooms  
2 Baths

50'-0" x 41'-3"

Total Living Area  
1,497 s.f.

Two Car Garage  
479 s.f.

Total Square Footage  
1,976

The Marblehead is a charming single story plan with three bedrooms and two bathrooms. The plan has a large family room in the center of the home, with an optional fireplace



560 Turnpike Street  
Canton, MA 02021  
Phone: 781-828-2100  
Fax: 781-828-1050

[Info@avalonbuildingsystems.com](mailto:Info@avalonbuildingsystems.com)  
[www.avalonbuildingsystems.com](http://www.avalonbuildingsystems.com)

# The Marblehead

# The Avalon Collection

Engineered homes built magnificently, promptly, affordably.

## Single Story Plan

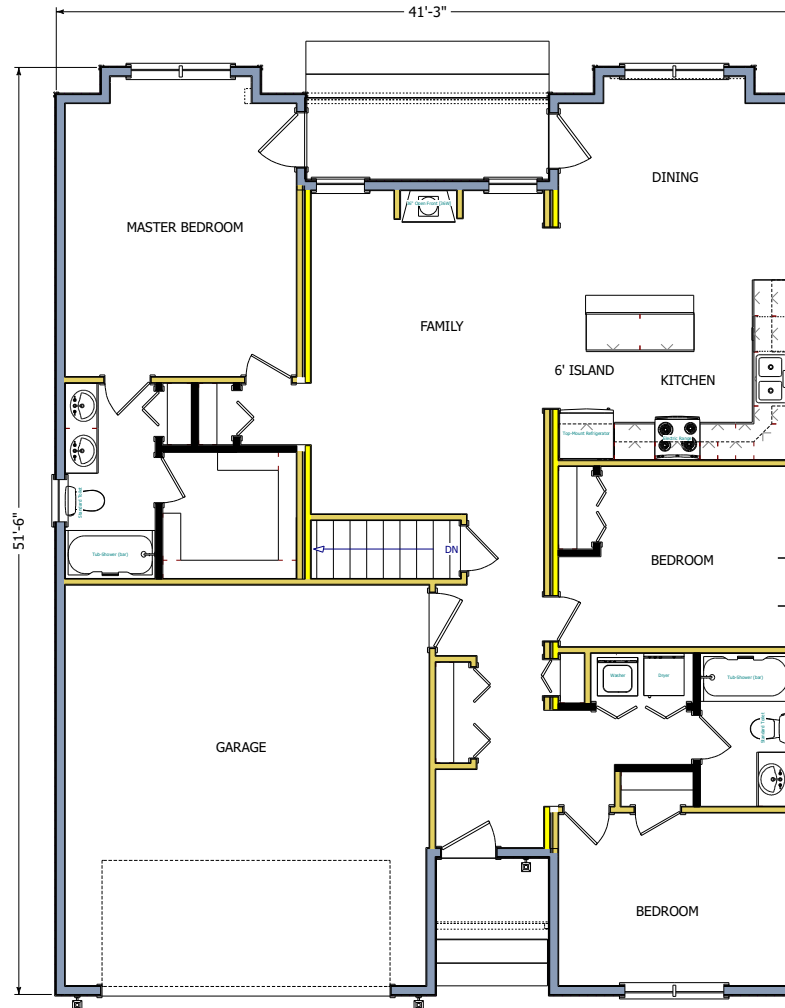
3 Bedrooms  
2 Baths

50'-0" x 41'-3"

Total Living Area  
1,497 s.f.

Two Car Garage  
479 s.f.

Total Square Footage  
1,976



1st Floor

560 Turnpike Street  
Canton, MA 02021  
Phone: 781-828-2100  
Fax: 781-828-1050

Info@avalonbuildingsystems.com  
www.avalonbuildingsystems.com