

# The Melrose

# The Avalon Collection

*Engineered homes built magnificently, promptly, affordably.*

## Mulifamily

Typical Unit  
2 Bedrooms  
1 1/2 Bath

39'-6" x 13'-9"

1st Floor 533 s.f.

2nd Floor 533 s.f.

Total Unit Square  
Footage 1066 s.f.

(Shown with optional  
porch)

The Melrose plan is a multi-family style plan which features two bedrooms in each unit. The plan contains two floors and the option to add as many units as necessary. The first floor features a wonderful open concept layout, which includes a laundry closet.

(Shown with optional porch)



560 Turnpike Street  
Canton, MA 02021

Phone: 781-828-2100

Fax: 781-828-1050

Info@avalonbuildingsystems.com  
www.avalonbuildingsystems.com

# The Melrose

# The Avalon Collection

*Engineered homes built magnificently, promptly, affordably.*

Mulifamily

Typical Unit  
2 Bedrooms  
1 1/2 Bath

39'-6" x 13'-9"

1st Floor 533 s.f.

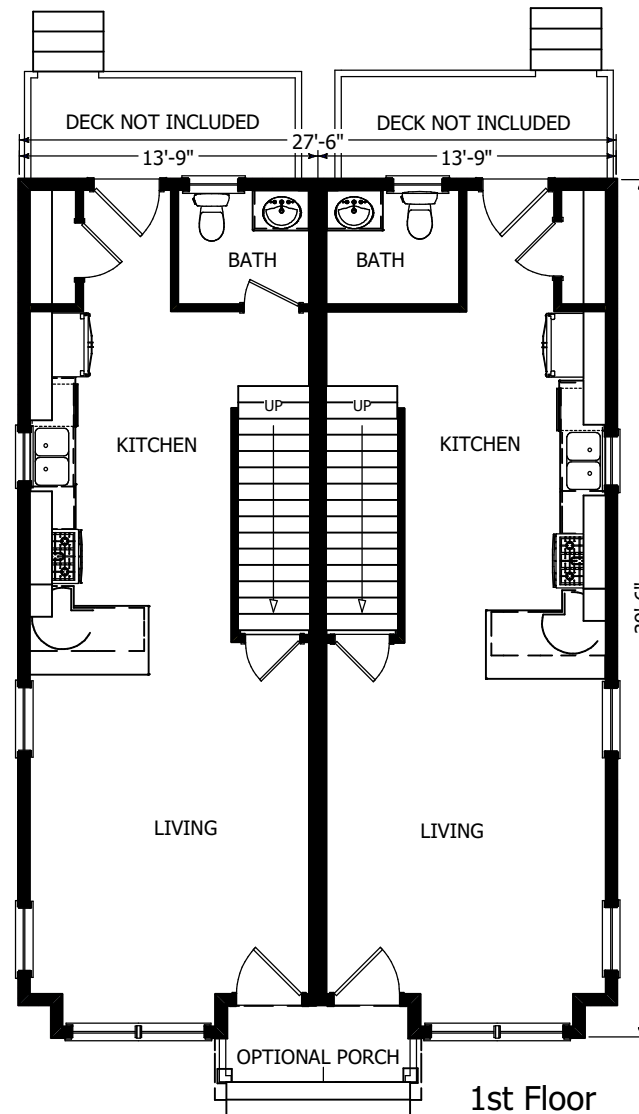
2nd Floor 533 s.f.

Total Unit Square  
Footage 1066 s.f.

(Shown with optional  
porch)

The Melrose plan is a multi-family style plan which features two bedrooms in each unit. The plan contains two floors and the option to add as many units as necessary. The first floor features a wonderful open concept layout, which includes a laundry closet.

(Shown with optional porch)



560 Turnpike Street  
Canton, MA 02021

Phone: 781-828-2100

Fax: 781-828-1050

Info@avalonbuildingsystems.com  
www.avalonbuildingsystems.com

# The Melrose

# The Avalon Collection

*Engineered homes built magnificently, promptly, affordably.*

Mulifamily

Typical Unit  
2 Bedrooms  
1 1/2 Bath

39'-6" x 13'-9"

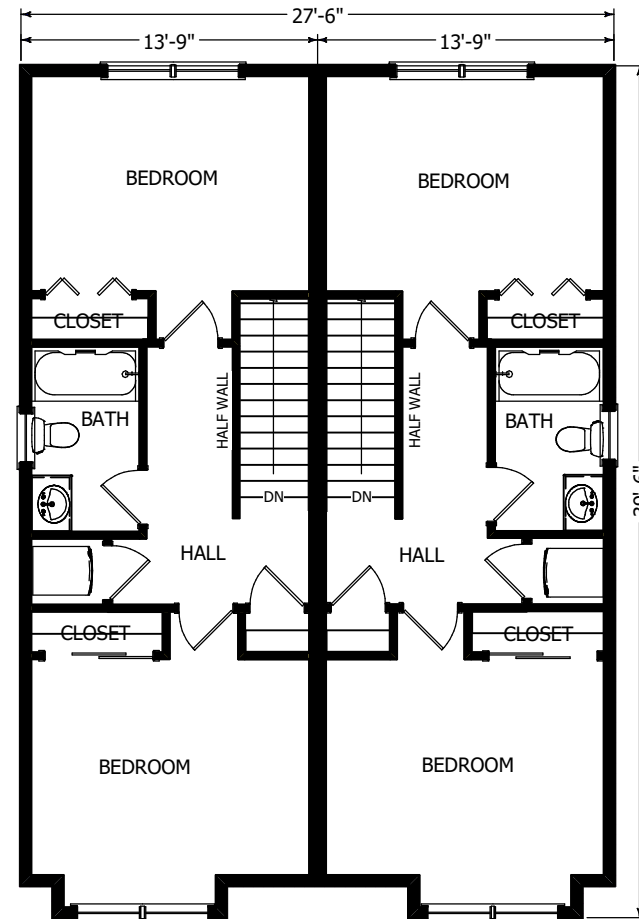
1st Floor 533 s.f.

2nd Floor 533 s.f.

Total Unit Square  
Footage 1066 s.f.

(Shown with optional  
porch)

The Melrose plan is a multi-family style plan which features two bedrooms in each unit. The plan contains two floors and the option to add as many units as necessary. The first floor features a wonderful open concept layout, which includes a laundry closet.  
(Shown with optional porch)



2nd Floor



560 Turnpike Street  
Canton, MA 02021

Phone: 781-828-2100

Fax: 781-828-1050

Info@avalonbuildingsystems.com  
www.avalonbuildingsystems.com