

The Paxton

The Avalon Collection

Engineered homes built magnificently, promptly, affordably.

Accessory Dwelling Unit

1 Bedrooms / 1 Bath

13'-9" X 45'-0"

Total Square Footage: 619 s.f.

Optional Porch

Discover the warmth of the Paxton, a charming home with 1 bedroom and 1 bathroom. Perfect for family members needing a separate living space, this cozy abode can also feature an inviting front porch.



560 Turnpike Street
Canton, MA 02021
Phone: 781-828-2100
Fax: 781-828-1050
Info@avalonbuildingsystems.com
www.avalonbuildingsystems.com

The Paxton

The Avalon Collection

Engineered homes built magnificently, promptly, affordably.

Accessory Dwelling Unit

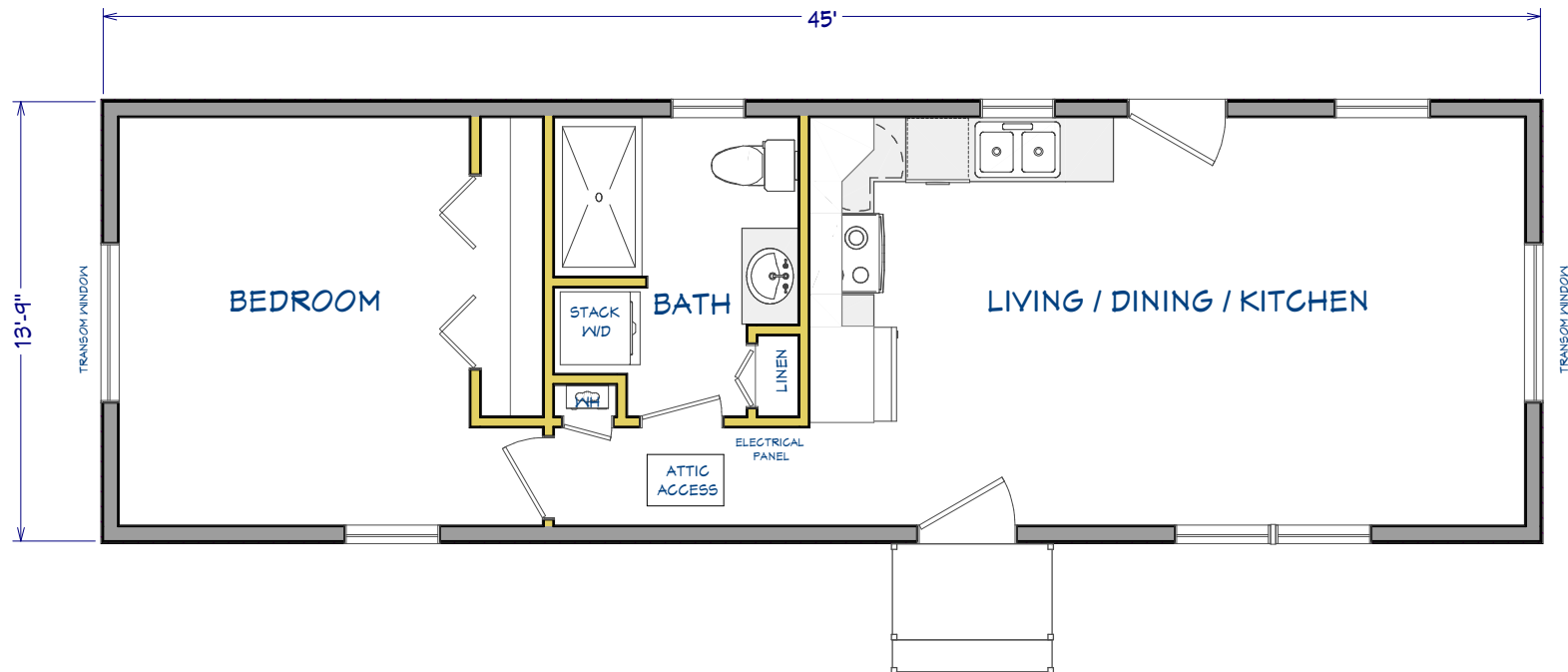
1 Bedrooms / 1 Bath

13'-9" X 45'-0"

Total Square Footage: 619 s.f.

Optional Porch

Discover the warmth of the Paxton, a charming home with 1 bedroom and 1 bathroom. Perfect for family members needing a separate living space, this cozy abode can also feature an inviting front porch.



560 Turnpike Street
Canton, MA 02021
Phone: 781-828-2100
Fax: 781-828-1050

Info@avalonbuildingsystems.com
www.avalonbuildingsystems.com