

# The Pleasant Lake

# The Avalon Collection

Engineered homes built magnificently, promptly, affordably.

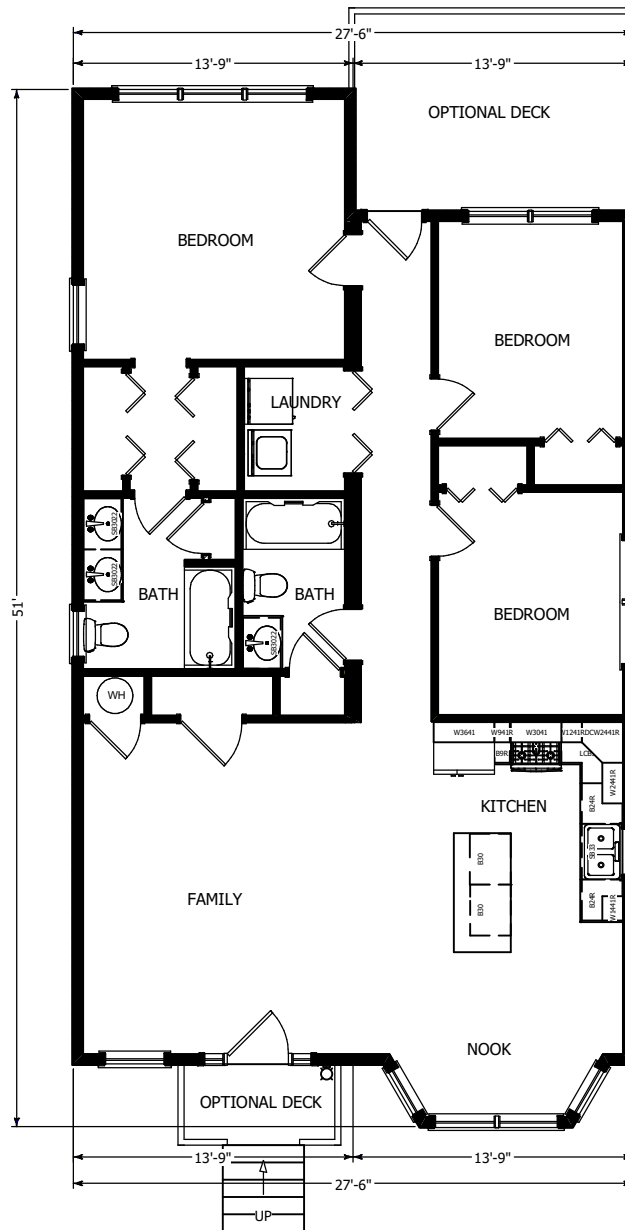
Coastal Style  
Plan

3 Bedrooms  
2 Baths

51'-0" X 27'-6"

First Floor 1265 s.f.

Optional Deck as  
Shown



1st Floor



The Pleasant Lake is a charming one-story home with a large eat in kitchen adjacent to a generous Family Room. The home features a bow front dining nook with windows and offers a large master suite with 2 additional bedrooms and generous closet space.



560 Turnpike Street  
Canton, MA 02021  
Phone: 781-828-2100  
Fax: 781-828-1050

Info@avalonbuildingsystems.com  
www.avalonbuildingsystems.com