

# The Sturbridge

# The Avalon Collection

*Engineered homes built magnificently, promptly, affordably.*

## Accessory Dwelling Unit

2 Bedrooms / 1 Bath

27'-6" X 26'-0"

Total Square Footage: 1430 s.f.

Living Area: 715 s.f.

Garage: 715 s.f.

Experience timeless charm with The Sturbridge, a classic carriage house garage featuring a cozy living space on the second floor. This elegant structure includes 2 bedrooms and 1 bathroom, making it a perfect addition to your homestead.



560 Turnpike Street  
Canton, MA 02021  
Phone: 781-828-2100  
Fax: 781-828-1050

Info@avalonbuildingsystems.com  
www.avalonbuildingsystems.com

# The Sturbridge

# The Avalon Collection

Engineered homes built magnificently, promptly, affordably.

## Accessory Dwelling Unit

2 Bedrooms / 1 Bath

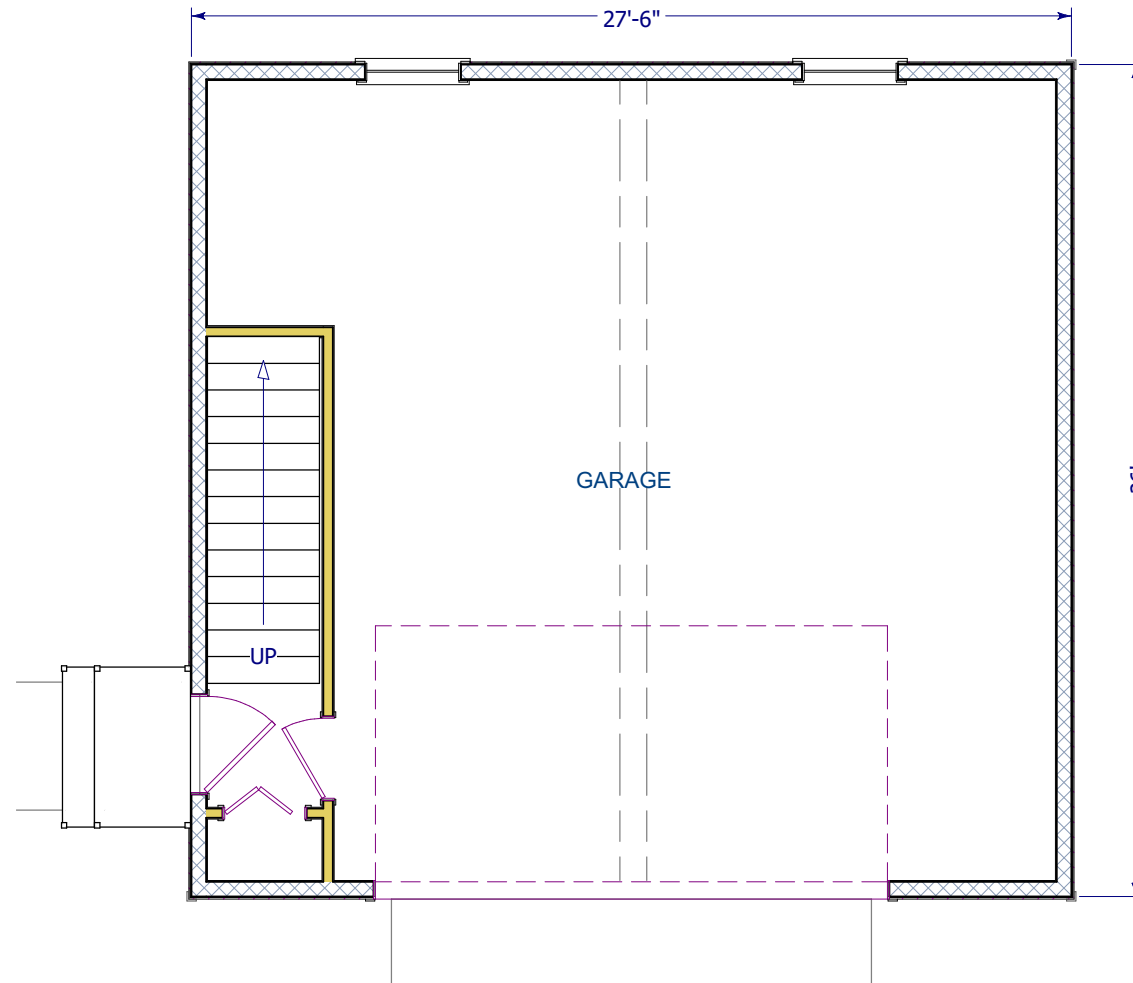
27'-6" X 26'-0"

Total Square Footage: 1430 s.f.

Living Area: 715 s.f.

Garage: 715 s.f.

Experience timeless charm with The Sturbridge, a classic carriage house garage featuring a cozy living space on the second floor. This elegant structure includes 2 bedrooms and 1 bathroom, making it a perfect addition to your homestead.



560 Turnpike Street  
Canton, MA 02021  
Phone: 781-828-2100  
Fax: 781-828-1050  
Info@avalonbuildingsystems.com  
www.avalonbuildingsystems.com

# The Sturbridge

# The Avalon Collection

Engineered homes built magnificently, promptly, affordably.

## Accessory Dwelling Unit

2 Bedrooms / 1 Bath

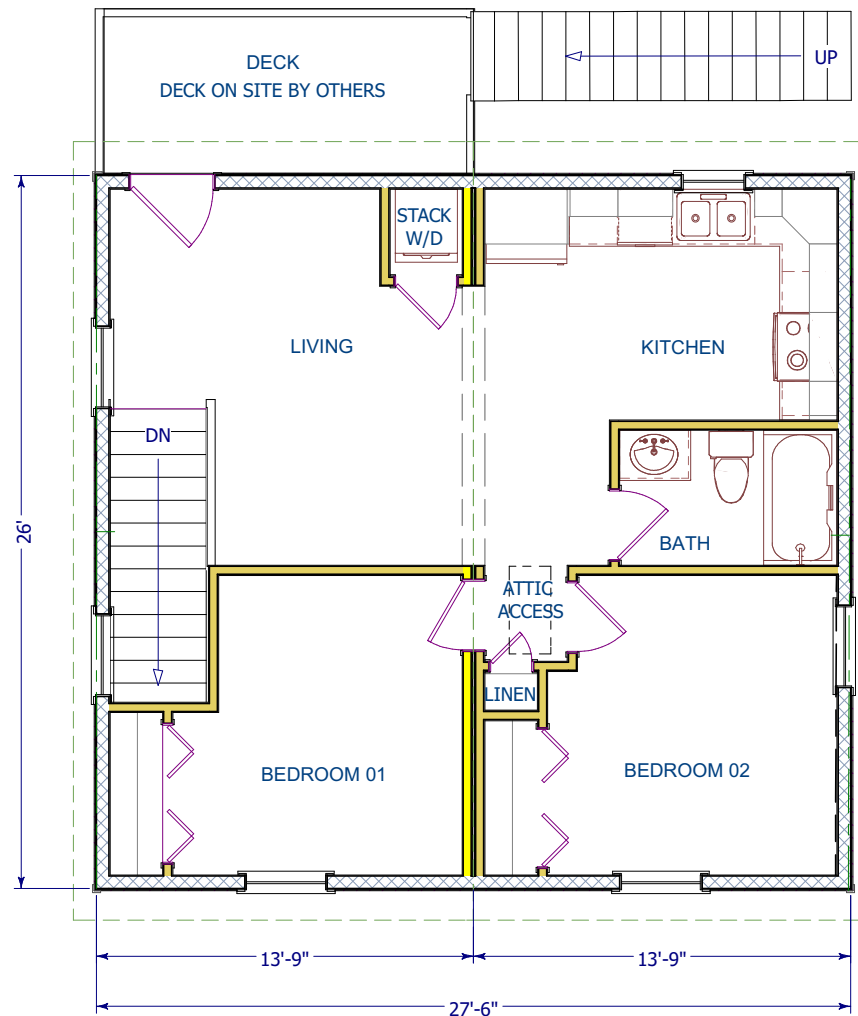
27'-6" X 26'-0"

Total Square Footage: 1430 s.f.

Living Area: 715 s.f.

Garage: 715 s.f.

Experience timeless charm with The Sturbridge, a classic carriage house garage featuring a cozy living space on the second floor. This elegant structure includes 2 bedrooms and 1 bathroom, making it a perfect addition to your homestead.



560 Turnpike Street  
Canton, MA 02021  
Phone: 781-828-2100  
Fax: 781-828-1050  
Info@avalonbuildingsystems.com  
www.avalonbuildingsystems.com