

The Yarborough

The Avalon Collection

Engineered homes built magnificently, promptly, affordably.

Accessory Dwelling Unit

The Yarborough is a spacious and attractive home with an open living / dining/ kitchen area. This home would be great as an additional dwelling unit or on its own lot.

2 Bedrooms / 2 Baths

15'-9" X 60'-0"

Total Square Footage: 945 s.f.

Optional Porch



560 Turnpike Street
Canton, MA 02021
Phone: 781-828-2100
Fax: 781-828-1050
Info@avalonbuildingsystems.com
www.avalonbuildingsystems.com

The Yarborough

The Avalon Collection

Engineered homes built magnificently, promptly, affordably.

Accessory Dwelling Unit

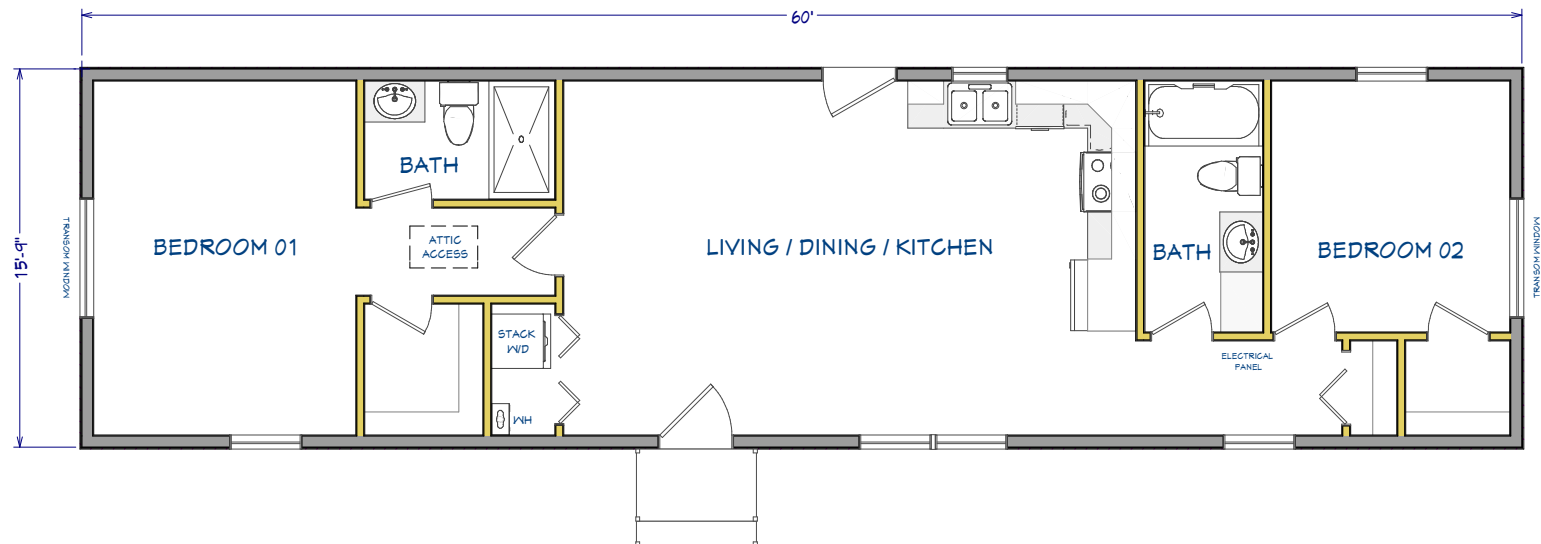
The Yarborough is a spacious and attractive home with an open living / dining / kitchen area. This home would be great as an additional dwelling unit or on its own lot.

2 Bedrooms / 2 Baths

15'-9" X 60'-0"

Total Square Footage: 945 s.f.

Optional Porch



560 Turnpike Street
Canton, MA 02021
Phone: 781-828-2100
Fax: 781-828-1050
Info@avalonbuildingsystems.com
www.avalonbuildingsystems.com