

# The Weston

# The Avalon Collection

*Engineered homes built magnificently, promptly, affordably.*

## Two Story Plan

4 Bedrooms  
3.5 Baths

54'-0" x 27'-6"

1st Floor 1,495 s.f.

2nd Floor 1,465 s.f.

Total Living Area  
2,960 s.f.

Shown with optional  
garage and bonus room

The Weston is a beautiful four bedroom, three and half bath colonial. The plan has a large kitchen and butlers pantry, as well as an optional space above the garage.



560 Turnpike Street  
Canton, MA 02021

Phone: 781-828-2100

Fax: 781-828-1050

Info@avalonbuildingsystems.com  
www.avalonbuildingsystems.com

# The Weston

# The Avalon Collection

Engineered homes built magnificently, promptly, affordably.

## Two Story Plan

4 Bedrooms  
3.5 Baths

54'-0" x 27'-6"

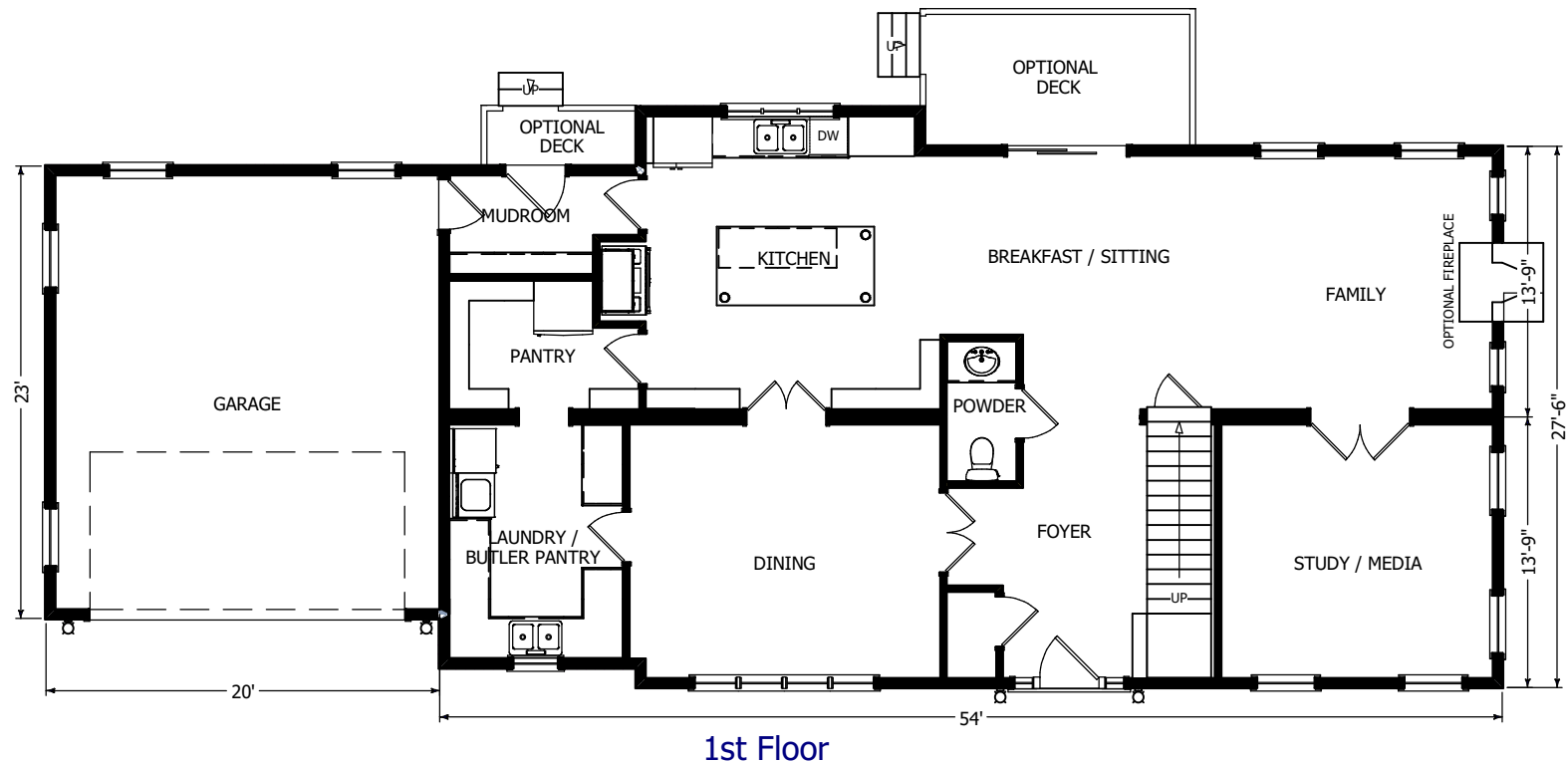
1st Floor 1,495 s.f.

2nd Floor 1,465 s.f.

Total Living Area  
2,960 s.f.

Shown with optional  
garage and bonus room

The Weston is a beautiful four bedroom, three and half bath colonial. The plan has a large kitchen and butlers pantry, as well as an optional space above the garage.



560 Turnpike Street  
Canton, MA 02021

Phone: 781-828-2100

Fax: 781-828-1050

Info@avalonbuildingsystems.com  
www.avalonbuildingsystems.com

# The Weston

# The Avalon Collection

Engineered homes built magnificently, promptly, affordably.

## Two Story Plan

4 Bedrooms  
3.5 Baths

54'-0" x 27'-6"

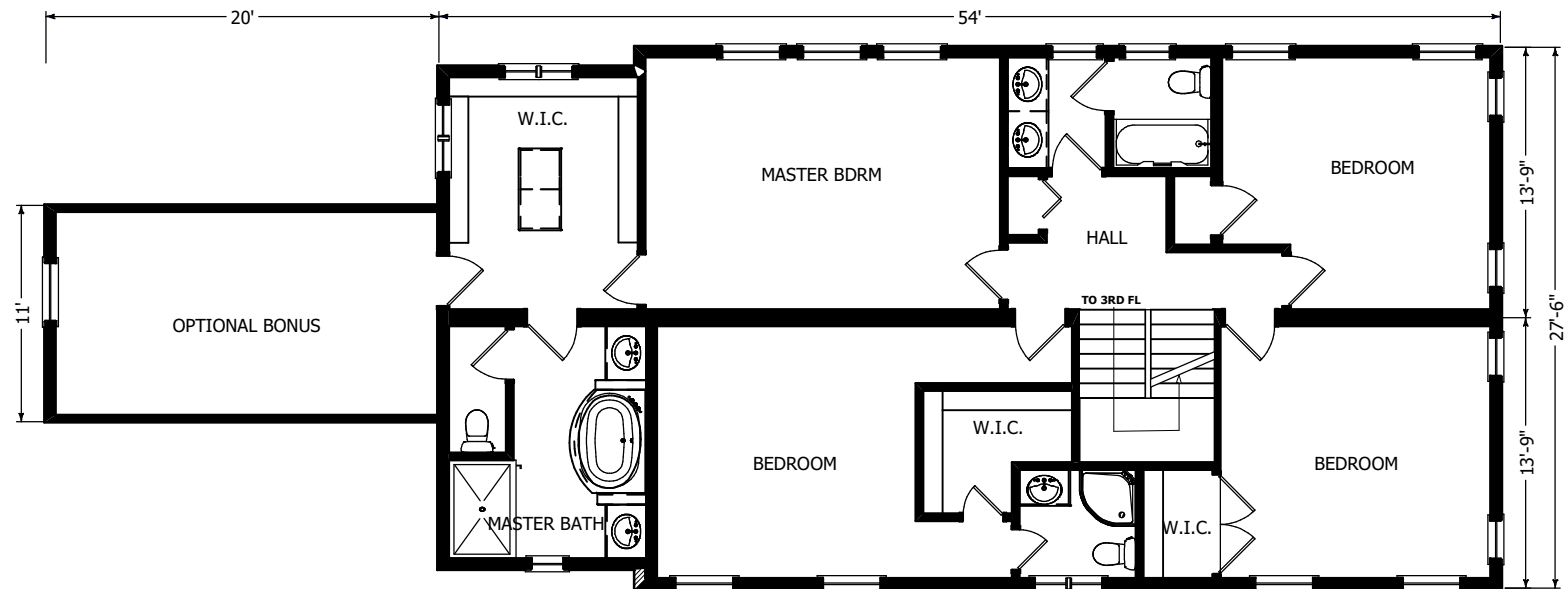
1st Floor 1,495 s.f.

2nd Floor 1,465 s.f.

Total Living Area  
2,960 s.f.

Shown with optional  
garage and bonus room

The Weston is a beautiful four bedroom, three and half bath colonial. The plan has a large kitchen and butlers pantry, as well as an optional space above the garage.



2nd Floor



560 Turnpike Street  
Canton, MA 02021

Phone: 781-828-2100

Fax: 781-828-1050

Info@avalonbuildingsystems.com

www.avalonbuildingsystems.com