

The Brighton

The Avalon Collection

Engineered homes built magnificently, promptly, affordably.

Multifamily

2 Bedrooms
1 1/2 Baths
(each unit)

40'-0" x 27'-6"

1st Floor 1100 s.f.

2nd Floor 1100 s.f.

Total Living Area
2200 s.f.

(Shown with optional
front porch)

The Brighton is a two family design, which offers two bedrooms and one and a half bathrooms. The living space includes a large eat-in kitchen and living room.

(Shown with optional front porch)



560 Turnpike Street
Canton, MA 02021

Phone: 781-828-2100

Fax: 781-828-1050

Info@avalonbuildingsystems.com
www.avalonbuildingsystems.com

The Brighton

The Avalon Collection

Engineered homes built magnificently, promptly, affordably.

Multifamily

2 Bedrooms
1 1/2 Baths
(each unit)

40'-0" x 27'-6"

1st Floor 1100 s.f.

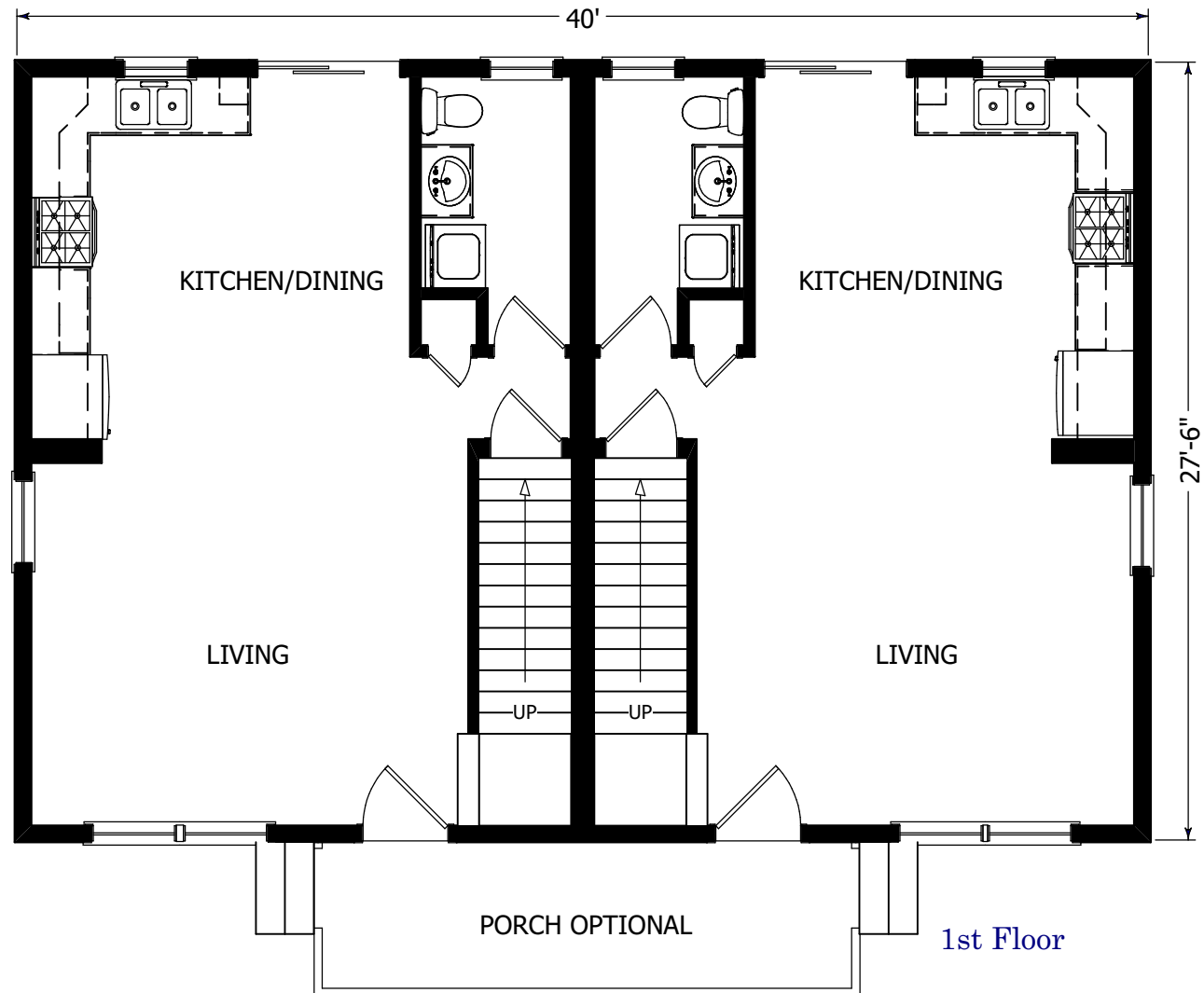
2nd Floor 1100 s.f.

Total Living Area
2200 s.f.

(Shown with optional
front porch)

The Brighton is a two family design, which offers two bedrooms and one and a half bathrooms. The living space includes a large eat-in kitchen and living room.

(Shown with optional front porch)



560 Turnpike Street
Canton, MA 02021

Phone: 781-828-2100

Fax: 781-828-1050

Info@avalonbuildingsystems.com
www.avalonbuildingsystems.com

The Brighton

The Avalon Collection

Engineered homes built magnificently, promptly, affordably.

Multifamily

2 Bedrooms

1 1/2 Baths
(each unit)

40'-0" x 27'-6"

1st Floor 1100 s.f.

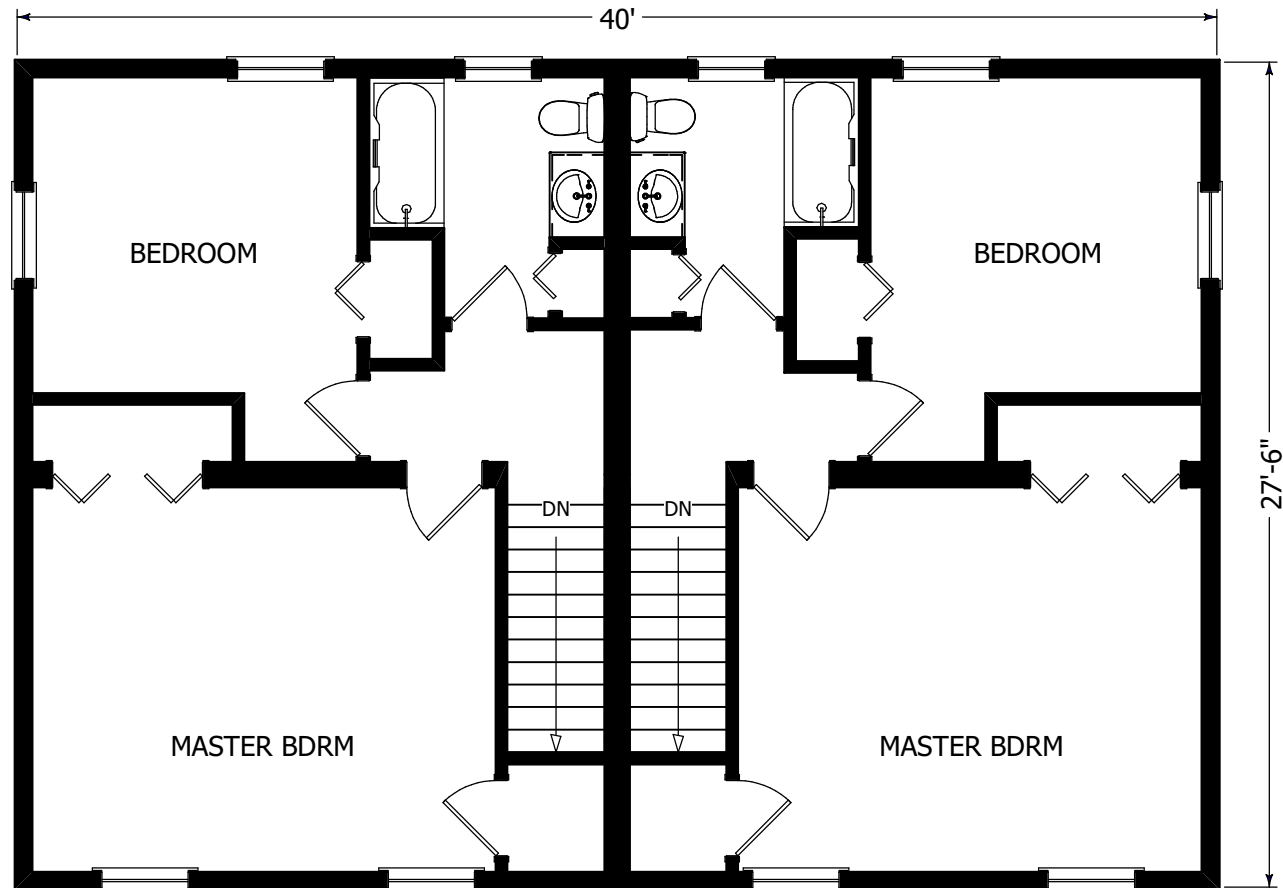
2nd Floor 1100 s.f.

Total Living Area
2200 s.f.

(Shown with optional
front porch)

The Brighton is a two family design, which offers two bedrooms and one and a half bathrooms. The living space includes a large eat-in kitchen and living room.

(Shown with optional front porch)



2nd Floor



560 Turnpike Street
Canton, MA 02021

Phone: 781-828-2100

Fax: 781-828-1050

Info@avalonbuildingsystems.com

www.avalonbuildingsystems.com